

City of Venus, TX, Combination Tax and Revenue Certificates of Obligation, Series 2020

EMMA Link - issuer's most recent disclosures <https://emma.msrb.org/IssueView/Details/RE402114>

Most Recent Update 10/25/2025

Bonds Dated Date 9/1/2020

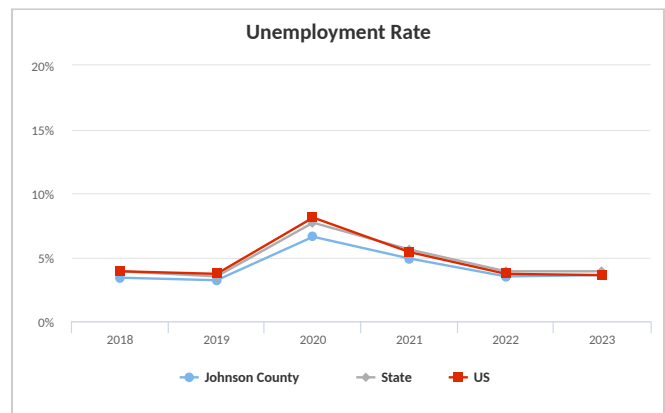
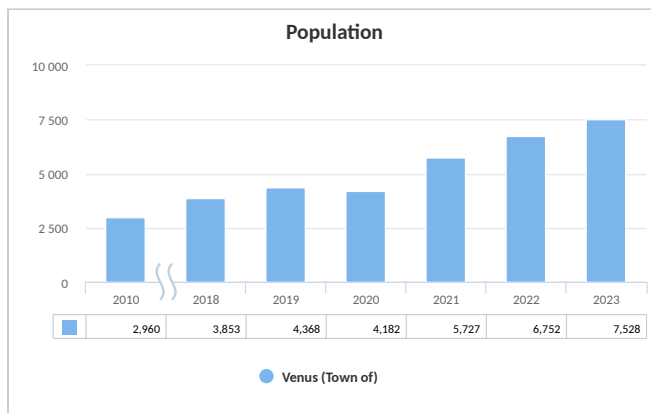
Use of Proceeds The Bonds are being issued to fund various capital improvements.

Bond Security

The Bonds are direct obligations of the Issuer, payable from a combination of (i) the levy and collection of a direct and continuing ad valorem tax, within the limits prescribed by law, on all taxable property within the Issuer, and (ii) a limited pledge of certain revenues of the Issuer's system. Investors should refer to the official statement for a full description of the security for the Bonds.

CUSIPs	Payment Date	BAM Insured Principal Amount	Coupon	First Optional Redemption Date	Optional Redemption Price
923344CY9	2/15/26	145,000	2.000%		
923344CZ6	2/15/27	150,000	2.000%		
923344DA0	2/15/28	150,000	2.000%		
923344DB8	2/15/29	155,000	2.000%		
923344DD4	2/15/31	320,000	1.100%	2/15/30	100%
923344DF9	2/15/33	325,000	1.200%	2/15/30	100%
923344DH5	2/15/35	335,000	1.500%	2/15/30	100%
923344DK8	2/15/37	345,000	1.500%	2/15/30	100%
923344DM4	2/15/39	355,000	2.000%	2/15/30	100%
923344DP7	2/15/41	370,000	2.000%	2/15/30	100%
923344DR3	2/15/43	385,000	2.000%	2/15/30	100%
923344DT9	2/15/45	405,000	2.000%	2/15/30	100%
Total		3,440,000			

CUSIP identifiers have been provided by CUSIP Global Services, managed on behalf of the American Bankers Association by Standard & Poor's Financial Services, LLC, and are not for use or dissemination in a manner that would serve as a substitute for any CUSIP service. The CUSIP Database, © 2011 American Bankers Association. "CUSIP" is a registered trademark of the American Bankers Association.





Issuer: City of Venus

State: TX

County: Johnson

Sector: GO - City or Town

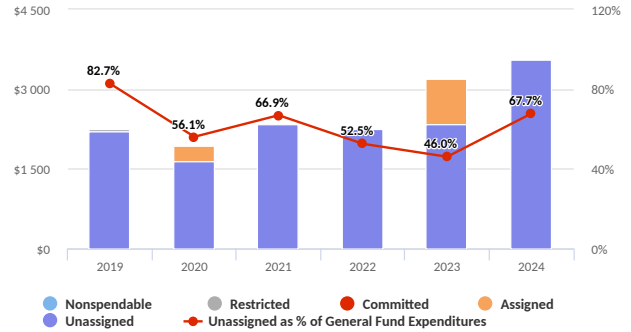
Employment by Industry - 2022*

Johnson County

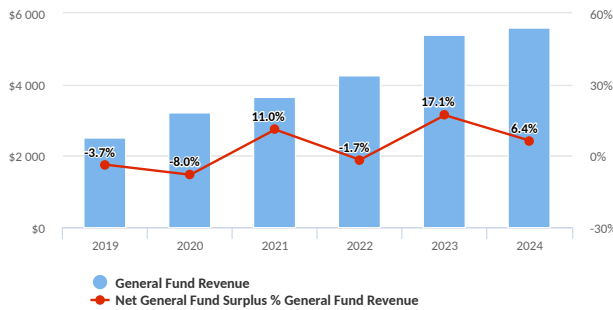
Description	# of People Employed	% Total
Retail Trade	9,791	11.0%
Construction	9,214	10.3%
Manufacturing	9,153	10.3%
Gov't & Gov't Ent	9,151	10.3%
Accommodation & Food Svcs	6,111	6.9%

*Source: Bureau of Economic Analysis

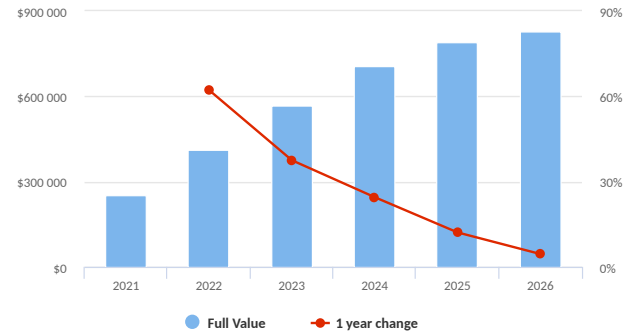
General Fund Balance (\$000)



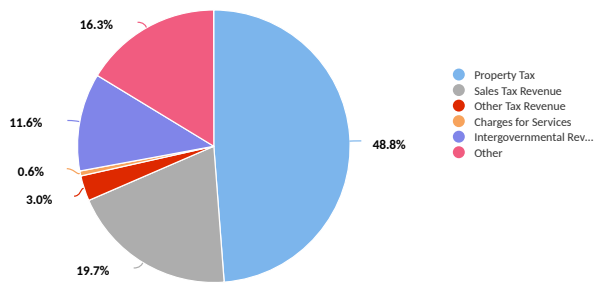
General Fund Revenue and Surplus/Deficit (\$000)



Full Value Trend (\$000)



General Fund Revenue Items



Information from Official Statement/Continuing Disclosure*

Top 10 Taxpayers (% of AV)	13.23%
Top Taxpayer (% of AV)	4.58%
Top Taxpayer (with industry)	Oncor Electric Delivery Company (Utility)
Total Direct Debt + Overlapping Debt (\$000)	32,056
Total Direct Debt + Overlapping Debt per capita (\$)	4,258
Total Direct Debt + Overlapping Debt as % of Full Value	3.9%
Unfunded Pension Liability (as reported) (\$000)	(85)
Unfunded OPEB Liability (as reported) (\$000)	N/A

*As of the date of the Most Recent Update

Location Description: The City is located approximately 30 miles southeast of Fort Worth, TX.

Notes



Town of Venus, TX

DEMOGRAPHIC INFORMATION					
Year	2023	2022	2021	2020	2019
Population	7,528	6,752	5,727	4,182	4,368
Unemployment Rate (Johnson County)	3.6%	3.5%	4.9%	6.6%	3.2%
% State	92.31%	89.74%	87.50%	85.71%	91.43%
% Nation	100.00%	94.59%	90.74%	81.48%	86.49%

TAX BASE					
Year	2026	2025	2024	2023	2022
Assessed Value (AV) (\$000)	693,505	660,957	561,302	445,444	331,980
Full Value (FV) (\$000)	826,937	791,272	705,836	566,742	412,213

DEBT & LIABILITY ANALYSIS (\$000)*	
Total Direct Debt	17,540
Total Direct Debt per Capita (\$)	2,330
Total Direct Debt / Full Value	2.1%
Pension Contributions	333
OPEB Contributions	-
Total Contribution to Pension & OPEB / Total General Fund Exp	6.3%

*As of the date of the Most Recent Update

INCOME DATA*		2023
Median Household Income		97,039
% State		127.2%
% Nation		124.9%
Poverty Rate		8.8%
% State		63.8%
% Nation		70.4%

*Data for Venus (Town of)

FINANCIAL DATA (\$000)						
General Fund						
Year	2024	2023	2022	2021	2020	2019
Fiscal Year End	09/30/2024	09/30/2023	09/30/2022	09/30/2021	09/30/2020	09/30/2019
Auditor Opinion Date	08/11/2025	12/09/2024	07/08/2024	08/14/2023	08/30/2021	07/09/2020
Revenue						
Property Tax	2,737	2,434	2,044	1,633	1,461	1,155
Sales Tax Revenue	1,102	907	827	749	589	513
Income Tax Revenue						
Other Tax Revenue	170	160	129	132	128	96
Total Tax Revenue	4,009	3,500	3,000	2,513	2,178	1,764
Charges for Services	34	314	34	331	29	8
Intergovernmental Revenue	649	635	291	134	151	191
Other	914	957	928	690	866	535
Total Operating Revenue	5,605	5,407	4,252	3,668	3,224	2,498
Expenditures						
General Government Expenditure	1,322	1,327	1,105	618	717	904
Public Safety Expenditure	3,087	2,767	2,063	1,448	1,338	1,271
Public Works Expenditure	262	561	353	312	58	432
Other	577	437	782	1,126	825	48
Total Operating Expenditures	5,248	5,093	4,302	3,503	2,937	2,655
Net Operating Revenue (Net of Transfers)	358	924	(71)	405	(257)	(93)
Fund Balance						
Nonspendable			13	2	2	
Restricted	15	15	15	15	15	63
Committed						
Assigned		852			290	
Unassigned	3,555	2,345	2,260	2,343	1,647	2,196
Total	3,570	3,212	2,288	2,359	1,954	2,259
Liquidity						
Cash & Cash equivalents	5,220	4,844	4,258	2,579	1,423	2,255
Days Cash on Hand	363	347	361	269	177	310
Total Fund Balance as a % of General Fund Expenditures	68.0%	63.1%	53.2%	67.4%	66.5%	85.1%
Governmental Activities						
Revenue	8,136	8,243	5,978	4,871	3,931	3,408
Expenses	6,352	6,391	5,185	3,684	3,592	2,923
Change in Assets (Net of Transfers)	1,784	1,852	793	1,187	338	1,932
Total Net Assets	11,132	9,348	7,496	6,703	5,516	6,429

Notes

All Ratios are calculated using the most recent Financial and Demographic data available.
Financial data is not adjusted for restatements in prior years.

LIMITATIONS ON USE

By using this BAM Credit Profile you agree to the Terms of Use set forth in BAM's website located at <https://www.bambonds.com/terms-of-use/>. The information contained in this BAM Credit Profile has been obtained or derived from the issuer and various public sources, is for informational purposes only, may be subject to change, and is provided on an "as is" basis. BAM does not represent that such information is accurate, timely or complete and BAM disclaims any and all liability relating to the information contained herein, in the Official Statement, or in the issuer's continuing disclosure documents. In no event will BAM, its employees or officers be liable to any party for any damages, costs, expenses, legal fees or losses in connection with any use of or reliance on the information contained herein, in the Official Statement or in issuer's continuing disclosure documents, even if advised of the possibility of such damages. The information should not be relied upon and is not a substitute for the skill, judgment or experience of the investor, its management, employees, advisors and/or clients when making investment decisions. BAM does not act as a fiduciary or an advisor (investment, municipal or otherwise) and nothing herein shall be construed as a recommendation or advice given by BAM as to the sale or purchase of any securities. BAM Credit Profiles are produced for purchasers of bonds or other securities insured by BAM, and BAM members, rather than investors generally. The Official Statement will identify the bonds or other securities that are insured by BAM. A BAM Credit Profile is not intended to be an offer to sell or a solicitation of an offer to buy any securities and should not be used or considered as such under any circumstances. Any such offer or solicitation is made only by means of the issuer's Official Statement. If an Official Statement is not being delivered in connection with the sale of the Bonds, "Official Statement" for purposes of this Credit Profile shall be deemed to mean all information provided by, or on behalf of, the Issuer to the purchaser(s) of the Bonds.

© 2025, Build America Mutual Assurance Company